

**A home for art,
artists, and
your business
event.**



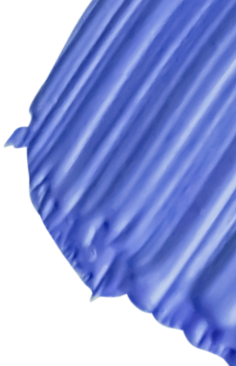
Contents	Your Building	04
	Your Food	26
	Your Support	30

**We're here for your event,
with a setting that connects you
to history, to culture, to creativity
and to Liverpool.**

**From the moment you enter
our unique space you'll notice
our commitment to creating
the best and most inclusive
experience for you.**

**And at the Bluecoat,
your money supports
our charitable mission,
to bring art to all.**

Thank you.



**An historic
location for
corporate
events of
all shapes,
sizes &
seasons.**

**In our Grade I listed
building we have the
space, services &
creativity to flex to
your needs**



Welcome to the Bluecoat

From summer parties to team meetings, from an end of year review to launching something new. For a few hours or all day. Bluecoat provides everything you need to make sure your event is one to remember.

Whether you're in need of high-energy entertainment or an open space for professional discussions, we've got the spaces, services and creative thinking to make it happen.

Your Building.





CHARITATE PROMOVENDA INOPIAE PVERITIA ECCLESIA ANGLICANA PRINCIPIS IMBENDA SACRVM ANNO SALVTIS

Welcome
to the
Bluecoat

b

A home
for art,
artists,
and you.

b

The Sandon Room.

Day hire:

Prices from £240 + VAT

Features:

Projector
Wifi

Capacities

Boardroom

20 people

Theatre

50 people

Classroom

40 people

Cabaret

40 people

Creative Workshop

30 people

Dinner

40 people

Evening Reception

60 people





The Sandon Room is a bright, airy and versatile space. With period features such as original floor to ceiling windows and its own private courtyard, The Sandon Room provides a unique setting for a variety of events including meetings, workshops and business dinners.



The Garden Room.

Day hire:

Prices from £240 +VAT

The Garden Room is used for many of our programmed courses and workshops and is the perfect space for creative away days and arty team building activities. With a view of our beautiful garden, the room benefits from lots of natural light and can be adapted to fit the needs of your event.



Features:

Projector
Wifi

Capacities

Boardroom
20 people

Theatre
50 people

Classroom
30 people

Cabaret
40 people

Creative Workshop
30 people

The Library.



Capacities

Boardroom

20 people

Classroom

20 people

Day hire:

Prices from £160 + VAT



The Bluecoat Library is home to much of our building's 300 year old history, archiving our rich past. Located on the first floor amongst artist studios and creative industry spaces, the Library overlooks our famous courtyard and facade and is a cosy, intimate room that can host up to 20 guests.

Features:

Projector & flat screen
Wifi

The Bistro.

The Bistro has been many things over the last three centuries; a chapel, a concert hall, and the site of Yoko Ono's performance art. Today its walls are adorned with contemporary art and its beautiful balcony overlooking the garden provides the perfect backdrop for an unforgettable event. With a fully equipped bar, the Bistro is ideal for networking events, dinners and evening receptions.

Day hire:
Prices from £600 +VAT

Features:

Projector
Wifi



Capacities

Cabaret
100 people

Creative Workshop
60 people

Dinner
100 people

Standing Reception
150 people



The Performance Space.

Day hire:
Prices
from £850
+VAT





Photography: Brian Roberts

Features:

Projector

Wifi

In-house technical support

Located in the art wing, the Performance Space is our largest room and is our most popular space for conferences, launches and larger networking events. Hire of the Performance Space also includes in-house technical support, on hand throughout your event.

Capacities

Theatre

120 people

Cabaret

80 people

Dinner

100 people

Standing Reception

250 people

The Garden.





Photography: Rob Battersby

Evening hire:
Prices from £500 +VAT

Capacity

Up to 150 people

The garden is one of the Bluecoat's most beautiful features, available from 6pm. Whether it's a staff party, or an evening product launch, the space provides an oasis of calm in the bustling city centre, and will give a unique edge to your event.



Sandon & Garden Rooms

Bookings only

SANDON & GARDEN ROOMS	
Breakfast	£5.50
Brunch	£6.50
Lunch	£7.50
Dinner	£8.50
Drinks	£2.50
Snacks	£1.50
Children's	£4.50
Vegetarian	£5.50
Vegan	£5.50
Gluten Free	£5.50
Diets	£5.50
Wine & Spirits	£10.00
Coffee & Tea	£2.50

The Hub.



Evening hire:
Prices from £950
+VAT

Capacity

Up to 150 people

With French doors leading into the Garden, the Bluecoat Hub is a great accompaniment to any Garden event, and can be hired on Mondays, and from 6pm Tuesday – Sunday. Furniture can be reconfigured to your requirements.

Take the corporate out of your event.



Photography: Brian Roberts

Give your attendees a moment worth remembering.

A memorable event needs to be made up of memorable moments. Our team can create the stand out activity that your event deserves. Whether it's a bespoke cocktail or an incredible choir, a print-making class or a guided tour of our exhibitions.

We want to make sure that your event reflects you and keeps your attendees engaged. That's why our team works with you to find the best fit.





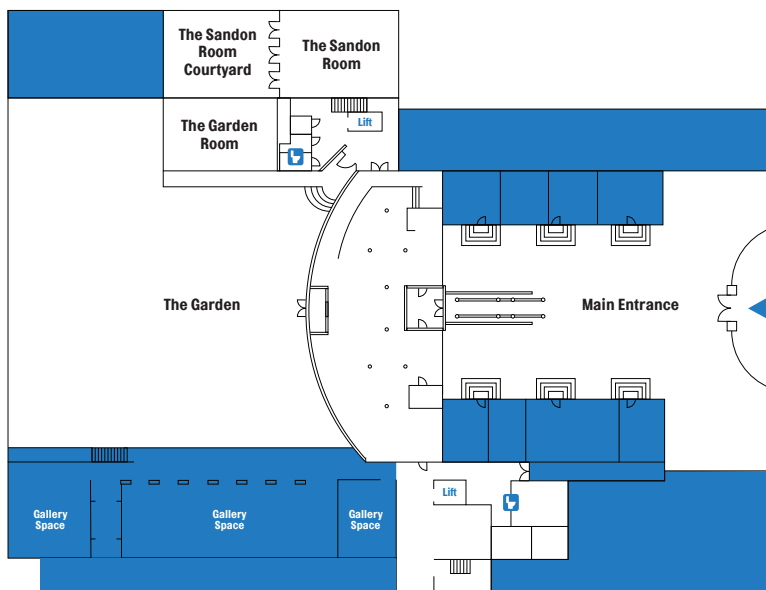
Your perfect event.

Thanks to Bluecoat's flexible spaces you can pick the one that's right for you, or you can move around the building throughout the day. Making sure that every moment is one to remember.

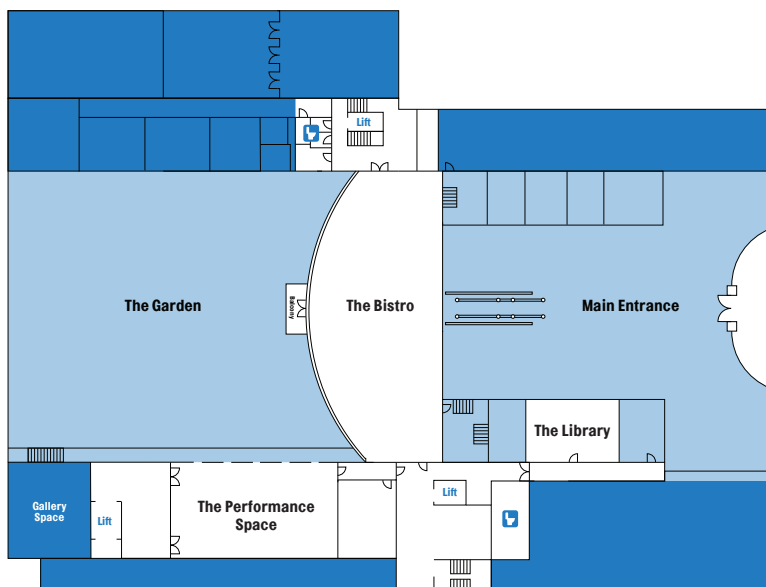
Space	Capacity*
Sandon Room	Up to 60
Garden Room	Up to 50
The Library	Up to 20
The Bistro	Up to 150
The Performance Space	Up to 250
The Garden	Up to 150

*Subject to configuration

Ground Floor



First Floor





Business breakfast, working lunch, celebration dinner.

Blending culinary creativity with practicality, our Chef's approach to the corporate events menu is to provide delicious and nutritious food options that can cater to a busy work schedule.

With a focus on freshness and sustainability, the menu's ingredients are sourced from

local suppliers where possible, and handcrafted in the Bluecoat's kitchen.

From a carefully selected wine list to seasonal non-alcoholic spritzes, our drinks menu has been curated to showcase a range of quality suppliers.



Your questions answered.

How do we confirm our event?

To confirm your booking, we require the room hire fee to be paid as a deposit.

Can we use our own caterers?

The Bluecoat has its own exclusive in-house caterers who have crafted our delicious menus. If you have specific requirements, our catering team is happy to discuss individual tastes and tailor our menus accordingly.

Can we hire your spaces for ticketed events?

Our venue hire is available for private events only. For public programme proposals, please contact live@thebluecoat.org.uk

What is your closest station?

Liverpool Lime Street and
Liverpool Central Station

What is your closest car park?

Q-park Hanover Street

Corporate events that give back to the local community.

As a charity, our mission is to bring art to all. By hosting your event at the Bluecoat, you are helping us keep admission to our exhibitions free for everyone, and directly supporting our art programmes including those for local schools and neurodivergent artists.



We know that businesses are people too.

With a dedicated event coordinator and delivery team, exclusive in-house caterers and a handpicked list of recommended suppliers, we're here to support you throughout your event to make sure it runs smoothly from start to finish.

Get in Touch

We'd be delighted to talk to you about holding your corporate event at the Bluecoat.

**Contact events@thebluecoat.org.uk
or call 0151 702 5324**

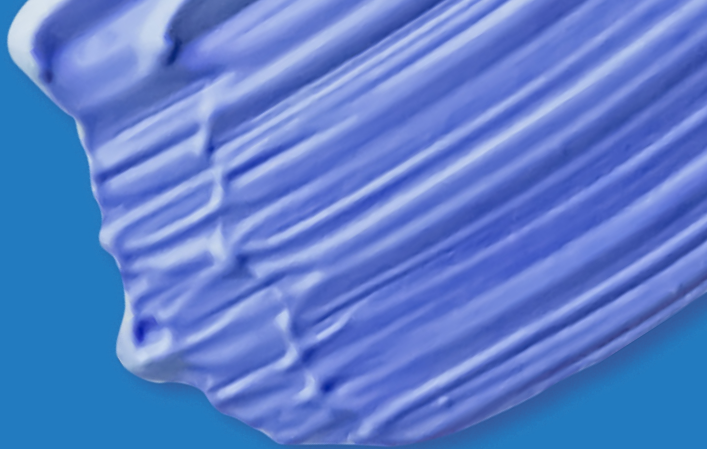
All photos without credits by Sophie Traynor.



R. F. BISSON
1803
ARTIST & CRITIC
ASSOCIATED WITH THIS
BUILDING FOR
OVER FIFTY YEARS

Welcome to Bluecoat

WILLIAM
1803
THE CONVENT
FUND 1803-1804
OF 1803-1804



The Bluecoat

thebluecoat.org.uk
events@thebluecoat.org.uk
0151 702 5324