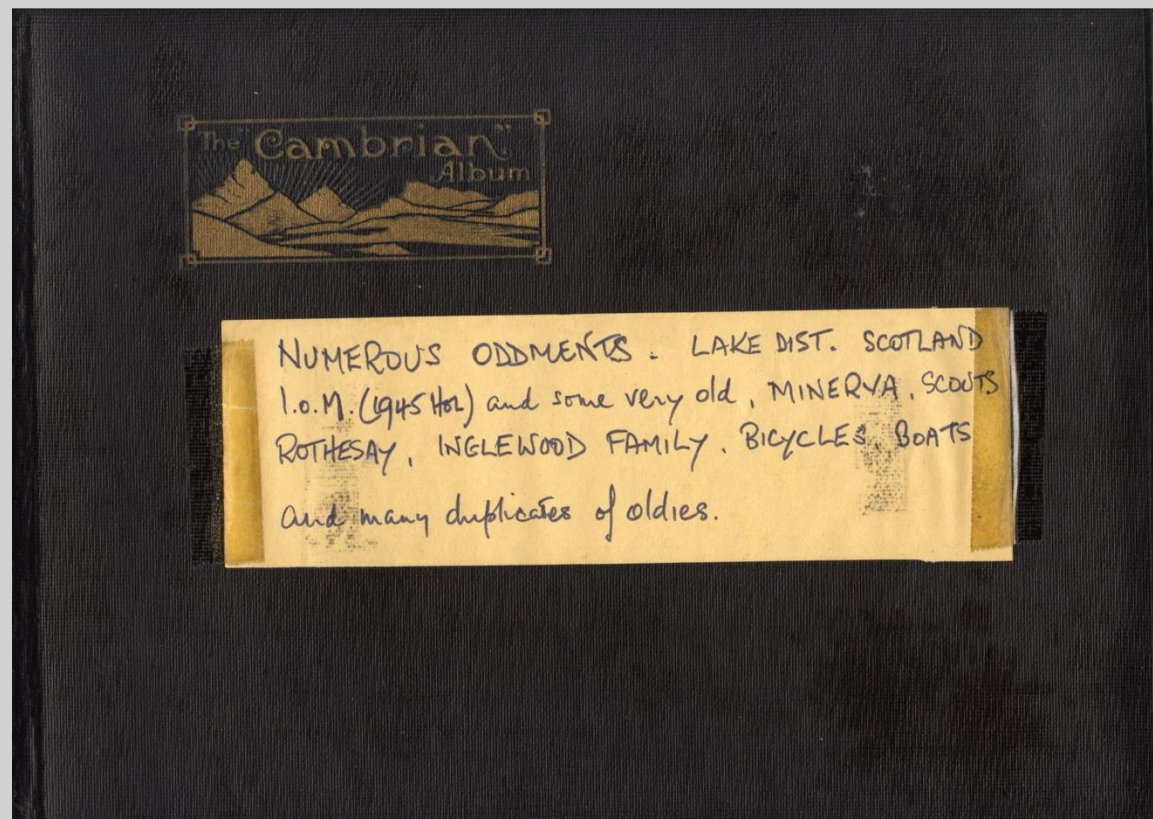
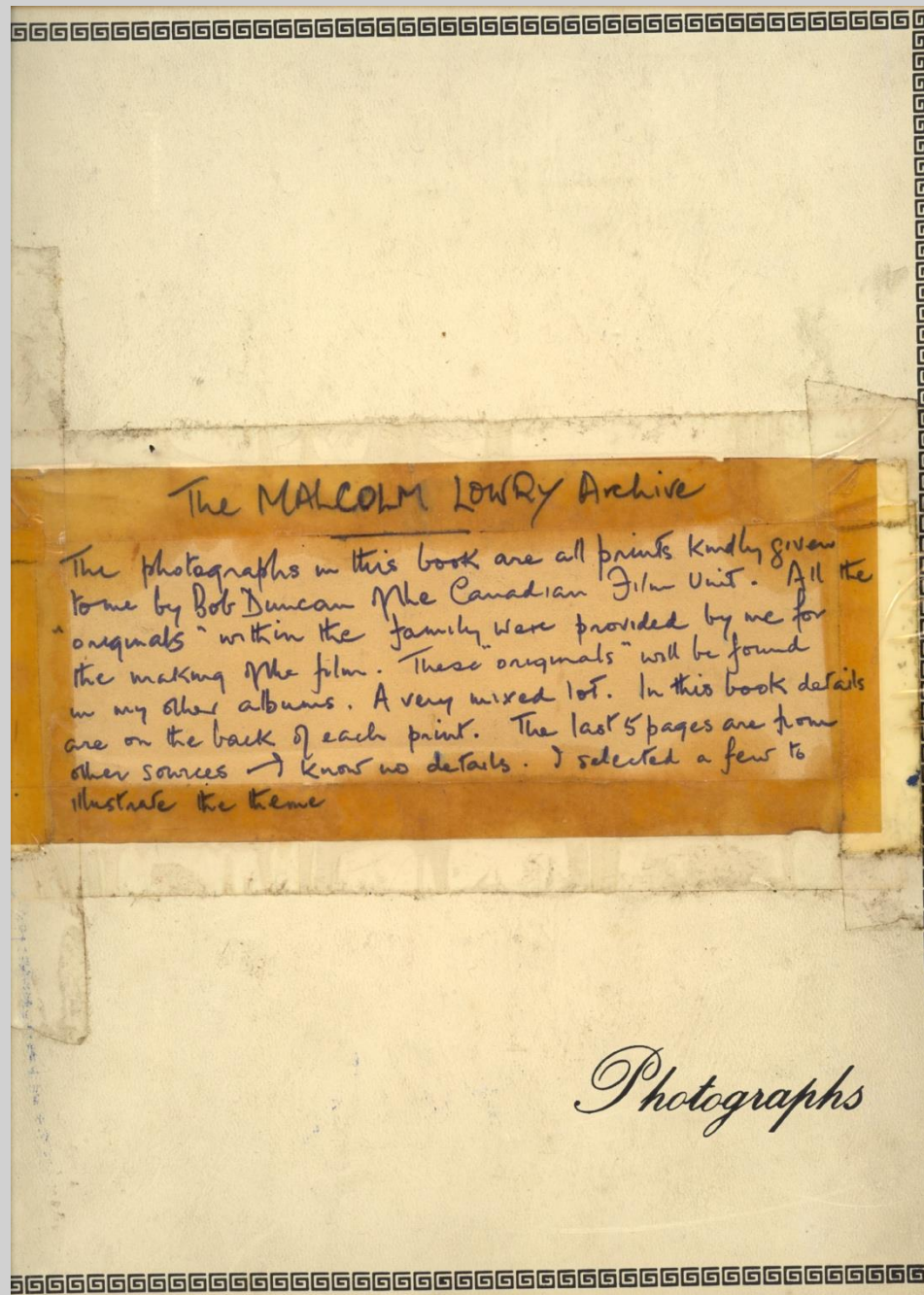




# “The Lad I Knew So Well”

Lowry outside the summer house in  
the garden at *Inglewood*, circa 1914



Lowry family photo albums, with captions by Russell Lowry, Malcolm's brother.

**All historical images in this presentation courtesy of the Lowry Family, unless stated otherwise, and  
© The Bluecoat and the Lowry Family**





The first picture of Malcolm:  
Russell, Stuart, Wilfrid and Miss Bell  
holding Malcolm, age one, on holiday,  
the Isle of Man, 1910



Left: Evelyn, Russell and Malcolm at *Inglewood*, circa 1920: "So Malcolm, 11, about to be crucified? It doesn't look it". Right: the same day, Russell, Arthur and Malcolm: "Rather a jolly picture of the Old Man. A rare item".



# Wilfred Owen's Wirral

Wilfred went horse riding with his friend Alex Paton on the beach here. New Brighton

Wallasey Egremont Liscard

A551 Leasowe

1

B5144

Seacombe

Meols

Moreton Biston

2

A553

Cloughton

Hoylake

A5021

Birkenhead

Wilfred spent time here at his Uncle and Auntie's home

Christ Church in Oxton were Wilfred and his Family worshiped

Woodside Wilfred's Father worked at the railway station that was here

Wilfred Owen Store in Argyle Street

Tranmere

Wilfred's three houses that he lived in are here

3

A552

Prenon

Rock Ferry

West Kirby

B5139

Newton

Frankby

Greasby

Upton

Thingwall

Irby

Caldy

Thurstaston

Pensby

Barnston

Higher Bebington

Storeton

Bebington

4

Poulton Spital

Port Sunlight

A41

Bromborough

Raby Mere

Eastham

M53

B5151

Thornton Hough

Gayton

Parkgate

Raby

Heswall

A540

A5137

Clatterbridge

Brimstage

Stretton

Barnston

Higher Bebington

Storeton

Bebington

Poulton Spital

Port Sunlight

A41

Bromborough

Raby Mere

Eastham

M53

B5151

Thornton Hough

Gayton

Parkgate

Raby

Heswall

A540

A5137

Clatterbridge

Brimstage

Stretton

Barnston

Higher Bebington

Storeton

Bebington

Poulton Spital

Port Sunlight

A41

Bromborough

Raby Mere

Eastham

M53

B5151

Thornton Hough

Gayton

Parkgate

Raby

Heswall

A540

A5137

Clatterbridge

Brimstage

Stretton

Barnston

Higher Bebington

Storeton

Bebington

Poulton Spital

Port Sunlight

A41

Bromborough

Raby Mere

Eastham

M53

B5151

Thornton Hough

Gayton

Parkgate

Raby

Heswall

A540

A5137

Clatterbridge

Brimstage

Stretton

Barnston

Higher Bebington

Storeton

Bebington

Poulton Spital

Port Sunlight

A41

Bromborough

Raby Mere

Eastham

M53

B5151

Thornton Hough

Gayton

Parkgate

Raby

Heswall

A540

A5137

Clatterbridge

Brimstage

Stretton

Barnston

Higher Bebington

Storeton

Bebington

Poulton Spital

Port Sunlight

A41

Bromborough

Raby Mere

Eastham

M53

B5151

Thornton Hough

Gayton

Parkgate

Raby

Heswall

A540

A5137

Clatterbridge

Brimstage

Stretton

Barnston

Higher Bebington

Storeton

Bebington

Poulton Spital

Port Sunlight

A41

Bromborough

Raby Mere

Eastham

M53

B5151

Thornton Hough

Gayton

Parkgate

Raby

Heswall

A540

A5137

Clatterbridge

Brimstage

Stretton

Barnston

Higher Bebington

Storeton

Bebington

Poulton Spital

Port Sunlight

A41

Bromborough

Raby Mere

Eastham

M53

B5151

Thornton Hough

Gayton

Parkgate

Raby

Heswall

A540

A5137

Clatterbridge

Brimstage

Stretton

Barnston

Higher Bebington

Storeton

Bebington

Poulton Spital

Port Sunlight

A41

Bromborough

Raby Mere

Eastham

M53

B5151

Thornton Hough

Gayton

Parkgate

Raby

Heswall

A540

A5137

Clatterbridge

Brimstage

Stretton

Barnston

Higher Bebington

Storeton

Bebington

Poulton Spital

Port Sunlight

A41

Bromborough

Raby Mere

Eastham

M53

B5151

Thornton Hough

Gayton

Parkgate

Raby

Heswall

A540

A5137

Clatterbridge

Brimstage

Stretton

Barnston

Higher Bebington

Storeton

Bebington

Poulton Spital

Port Sunlight

A41

Bromborough

Raby Mere

Eastham

M53

B5151

Thornton Hough

Gayton

Parkgate

Raby

Heswall

A540

A5137

Clatterbridge

Brimstage

Stretton

Barnston

Higher Bebington

Storeton

Bebington

Poulton Spital

Port Sunlight

A41

Bromborough

Raby Mere

Eastham

M53

B5151

Thornton Hough

Gayton

Parkgate

Raby

Heswall

A540

A5137

Clatterbridge

Brimstage

Stretton

Barnston

Higher Bebington

Storeton

Bebington

Poulton Spital

Port Sunlight

A41

Bromborough

Raby Mere

Eastham

M53

B5151

Thornton Hough

Gayton

Parkgate

Raby

Heswall

A540

A5137

Clatterbridge

Brimstage

Stretton

Barnston

Higher Bebington

Storeton

Bebington

Poulton Spital

Port Sunlight

A41

Bromborough

Raby Mere

Eastham

M53

B5151

Thornton Hough

Gayton

Parkgate

Raby

Heswall

A540

A5137

Clatterbridge

Brimstage

Stretton

Barnston

Higher Bebington

Storeton

Bebington

Poulton Spital

Port Sunlight

A41

Bromborough

Raby Mere

Eastham

M53

B5151

Thornton Hough

Gayton

Parkgate

Raby

Heswall

A540

A5137

Clatterbridge

Brimstage

Stretton

Barnston

Higher Bebington

Storeton

Bebington

Poulton Spital

Port Sunlight

A41

Bromborough

Raby Mere

Eastham

M53

B5151

Thornton Hough

Gayton

Parkgate

Raby

Heswall

A540

A5137

Clatterbridge

Brimstage

Stretton

Barnston

Higher Bebington

Storeton

Bebington

Poulton Spital

Port Sunlight

A41

Bromborough

Raby Mere

Eastham

M53

B5151

Thornton Hough

Gayton

Parkgate

Raby

Heswall

A540

A5137

Clatterbridge

Brimstage

Stretton

Barnston

Higher Bebington

Storeton

Bebington

Poulton Spital

Port Sunlight

A41

Bromborough

Raby Mere

Eastham

M53

B5151

Thornton Hough

Gayton

Parkgate

Raby

Heswall

A540

A5137

Clatterbridge

Brimstage

Stretton

Barnston

Higher Bebington

Storeton

Bebington

Poulton Spital

Port Sunlight

A41

Bromborough

Raby Mere

Eastham

M53

B5151

Thornton Hough

Gayton

Parkgate

Raby

Heswall

A540

A5137

Clatterbridge

Brimstage

Stretton

Barnston

Higher Bebington

Storeton

Bebington

Poulton Spital

Port Sunlight

A41

Bromborough

Raby Mere

Eastham

M53

B5151

Thornton Hough

Gayton

Parkgate

Raby

Heswall

A540

A5137

Clatterbridge

Brimstage

Stretton

Barnston

Higher Bebington

Storeton

Bebington

Poulton Spital

Port Sunlight

A41

Bromborough

Raby Mere

Eastham

M53

B5151

Thornton Hough

Gayton

Parkgate

Raby

Heswall

A540

A5137

Clatterbridge

Brimstage

Stretton

Barnston

Higher Bebington

Storeton

Bebington

Poulton Spital

Port Sunlight

A41

Bromborough

Raby Mere

Eastham

M53

B5151

Thornton Hough

Gayton

Parkgate

Raby

Heswall

A540

A5137

Clatterbridge

Brimstage

Stretton

Barnston

Higher Bebington

Storeton

Bebington

Poulton Spital

Port Sunlight

A41

Bromborough

Raby Mere

Eastham

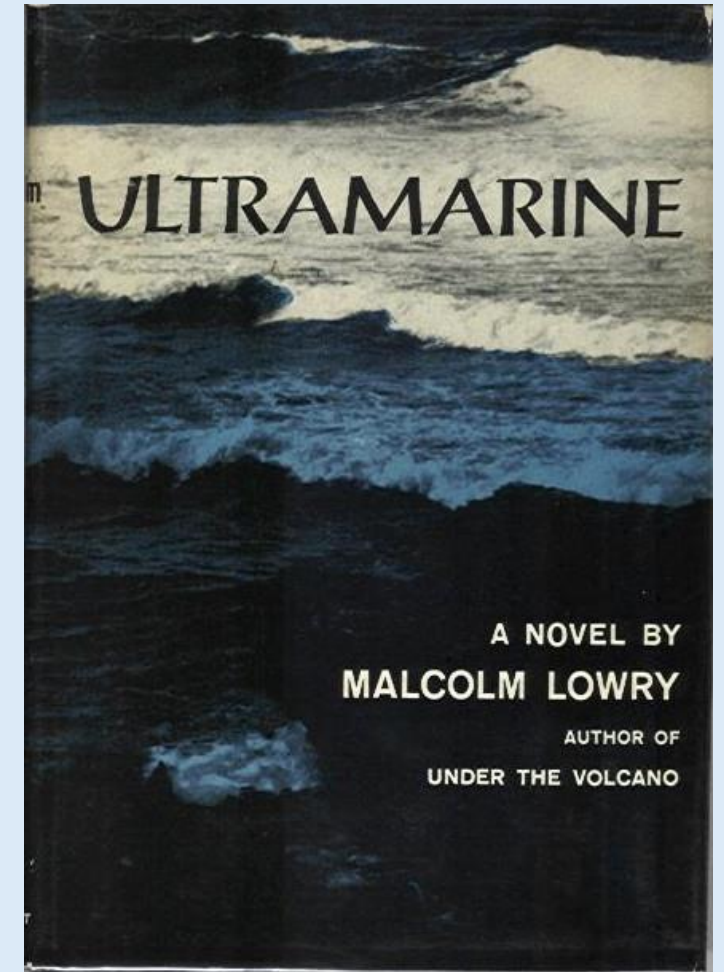
M53

B5151

Thornton H







SS *Pyrrhus* entering Birkenhead Docks. Lowry's voyage in 1927 on this ship was recounted in his first novel, *Ultramarine*





New Brighton Lighthouse, 2019 Lowry Lounge.  
Photo Al Peters

*Photo © Al Peters 2019*





Unveiling the blue plaque, New Brighton  
promenade, 2019



- **1909** Clarence Malcolm Lowry born at *Warren Crest*, 13 North Drive, New Brighton
- **1911** Family moves to *Inglewood*, Caldby
- **1914-19** Malcolm attends Braeside Preparatory School, West Kirby
- **1919-23** Attends Caldicott School, Hertfordshire
- **1923-27** Attends the Leys School, Cambridge
- **1927** Voyage to the Far East aboard the SS *Pyrrhus*
- **1928** Travels to Cambridge, MA, as 'paying guest' of mentor Conrad Aiken
- **1929** Goes up to Cambridge, returning to the family home during holidays but he never lived there again



Lowry's first school, Braeside in West Kirby.  
Image: Colin Dilnot



*Warren Crest, 13 North Drive,  
New Brighton*







Lowry Lounge 2017:  
walking tour led by  
Colin Dilnot stops  
opposite Lowry's  
house in North Drive



**NORTH DRIVE, NEW BRIGHTON.**  
*Montpellier crescent*  
 5 Rhodes William Henry stevedore  
 7 Phelps Mrs. Bridget  
 9 Esplen William, Jun. shipowner  
 11 Dickinson Frederick brush manufr.  
     *"Northcliffe"*  
 13 Lowry Arthur O. *"Warren Crest"*  
 17 Christensen Niels *"Ballum"*  
 19 Barlow Thomas William Naylor,  
     M.R.C.S. Eng., L.R.C.P. Lond.,  
     D.P.H. Camb. medical officer of  
     health Wallasey Municipal Boro'  
 21 McDonald John cotton broker  
 23 Crichton Charles M.  
 23 Crichton Robert Orr stockbroker  
     *Montpellier crescent*  
 Nicholson James G. shipowner  
     *"Oriente"*  
 Munn The Misses *"Tigh na Mara"*  
 Munn J. Miller *"Tigh na Mara"*  
 Meadows Wm. Alfred manufacturer  
     *"Lingcroft"*

21

No. 1, NEW BRIGHTON WARD—BOROUGH OF WALLASEY.

Division 1—continued.

1.	2.	3.	4.
Names of Electors in full, Su name being 6 st.	Place of Abode.	Nature of Qualification	Description of Qualifying Property.
<b>Mount Road, New Brighton—Continued.</b>			
429 Lord Henry	"Sedgley," Mount road	dwelling house	"Sedgley," Mount road
430 Platt Walter Ward	Warrendene, Mount road	dwelling house	Warrendene, Mount road
<b>North Drive, New Brighton.</b>			
431 Rhodes William	5 North drive	dwelling house	5 North drive
432 Esplen William	9 North drive	dwelling house	9 North drive
433 Dickenson Frederick William	11 North drive	dwelling house	11 North drive
434 Lowry Arthur Oswald	13 North drive	dwelling house	13 North drive
435 Pollard John Beresford	15 North drive	dwelling house (successive)	31 Stanley avenue and 15 North drive
436 Christiansen Neils	17 North drive	dwelling house	17 North drive
D3* 437 Barlow Thomas William Naylor	19 North drive	dwelling house	19 North drive
438 Crichton Charles Miller	23 North drive	dwelling house	23 North drive
439 Meadows William Alfred	"Longcroft," North drive	dwelling house	"Longcroft," North drive
440 Nicholson James Gifford	"Oriente," North drive	dwelling house	"Oriente," North drive

Records of the Lowrys' residence at 13 North Drive, including Gore's Directory (left)



2  
Dated 11<sup>th</sup> April 1906.

The Right Honorable Sir Ford  
North and Frederic North Esq<sup>rs</sup>  
at the request of Mess<sup>rs</sup> D. B. Rappart  
and W<sup>m</sup> Bellis

TO  
Joseph Brown Esq<sup>r</sup>

## Conveyance

of  
a piece of freehold land with the mesuage  
or dwellinghouse thereon erected situate and  
being numbered North Dune New  
Brighton in the County of Chester

W J Jones Septimus  
24 Castle Street  
Liverpool.

Dated 15 Aug 1918

Miss J and W H Brown

(To)  
Alfred Rogers Esq<sup>r</sup>

## Conveyance

of freehold land and dwellinghouse  
situate and being 8<sup>th</sup> 1/3 North  
Dune New Brighton in the County  
of Chester.

Wrightman Fletcher H<sup>c</sup>  
Liverpool

3  
This Indenture made the 15<sup>th</sup> day  
of August One thousand  
and eighteen Between Joseph Brown  
and William Henry Brown both of the City of  
Liverpool Shipowners (hereinafter called the Vendors) of  
the first part Lucie Esplen the Wife of William Esplen  
of Surs Cottage Wellington Road New Brighton in  
the County of Chester Shipowner of the second part and  
Alfred Rogers of 15 North Dune New Brighton in  
the County of Chester (hereinafter called the purchaser)  
of the third part Whereas by an Indenture dated the  
eleventh day of April One thousand nine hundred  
and six and made between The Right Honourable  
Sir Ford North and Frederic North of the first part  
David Benno Rappart of the second part William Bellis  
of the third part and the said Joseph Brown of the  
fourth part the hereditaments hereinafter expressed to be  
hereby conveyed were granted and conveyed unto the  
said Joseph Brown his heirs and assigns in fee  
simple subject to the restrictive covenants therein  
contained And whereas that by an Indenture dated  
the 15<sup>th</sup> day of June One thousand nine hundred  
and sixteen and made between the said Joseph Brown  
of the first part the said Lucie Esplen (by her then  
name of Lucie Browns of the second part and the

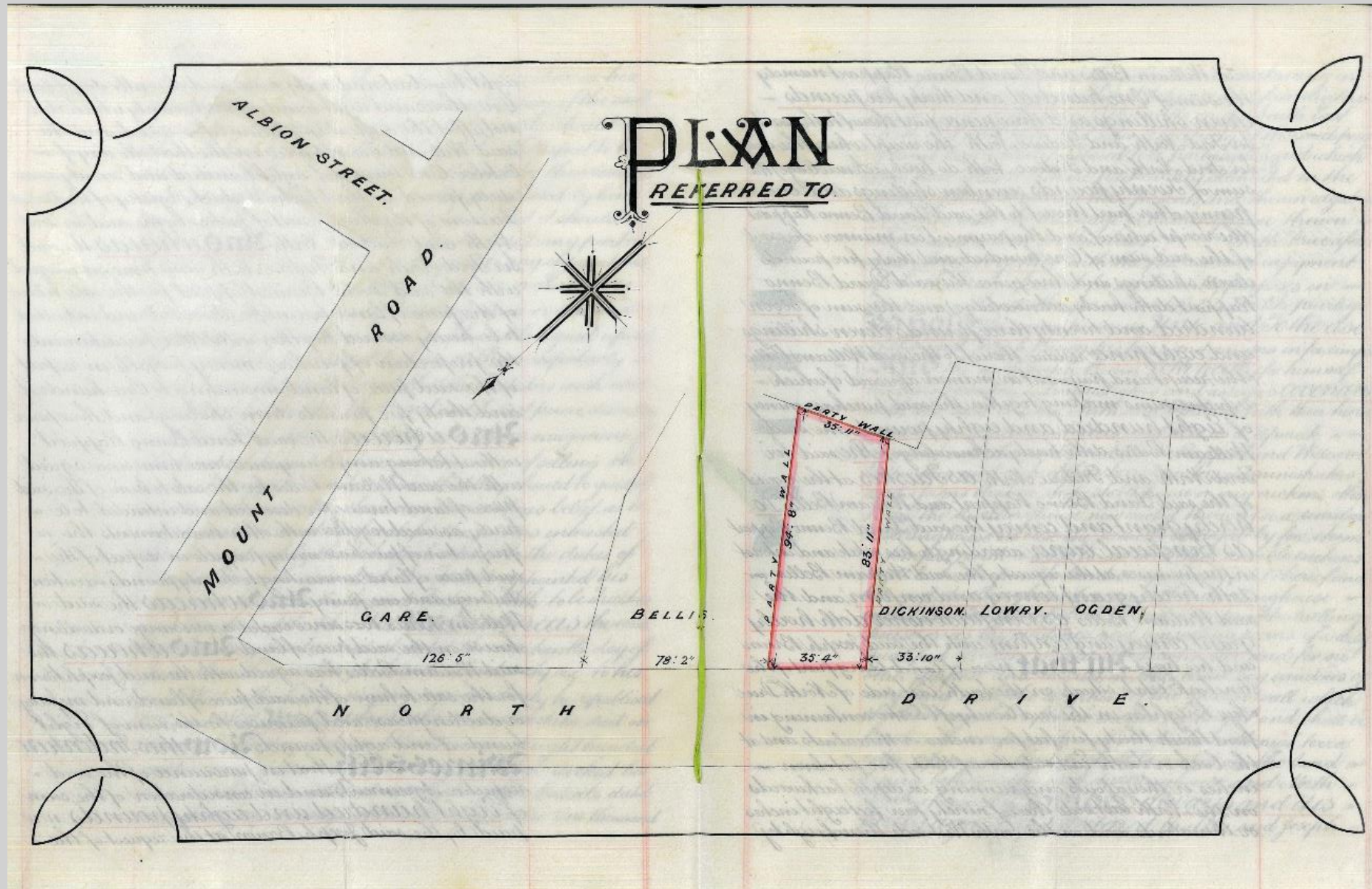


Deeds of the house, 1906 and 1918









Plan of houses on  
North Drive, from  
the deeds of  
number 13, 1906



New Brighton and the Mersey estuary







The Lowry's second shack at Dollarton, purchased in 1941 for \$100 and destroyed by fire in 1944; life at the shack. Images © University of British Columbia Library, Rare Books and Special Collections, Malcolm Lowry Collection





Shell oil refinery across the Burrard Inlet from Dollarton



Flintshire coast across the Dee from Caldy





Dollarton/Burrard Inlet



Caldy/Deeside





*Inglewood at Caldy*





Malcolm and  
Russell, circa 1919.  
“The field below  
Inglewood was  
bought at this time”.





WEST KIRBY FROM GRANGE HILL





Hoylake Lower Lighthouse

*Promenade, Hoylake. MM.*

*ERNE WALKER SERIES  
GEOGRAPHY CLUB.*





*Inglewood today*





Malcolm in the garden at *Inglewood*, circa 1914





Malcolm Arthur  
strike into field alongside Inglewood  
Presumably about 1914. The same  
sailor suit as in garden picture

Malcolm and his father, Arthur, circa 1914: photo captioned by Russell Lowry





Malcolm in the garden at  
*Inglewood*, circa 1915





Malcolm making hay at *Inglewood*





Halcyon days? Malcolm (in hat) in the countryside and (right) in the garden at *Inglewood*, circa 1915.  
“The trees seem to have grown since the sailor suit picture”.





“Arthur and Malcolm in the garden at *Inglewood*. Cricket was not in fact an Inglewood game, but nice to see father playing! Presumably around 1915.”





Malcolm in the garden at *Inglewood*, circa 1915 with his mother Evelyn, “striped cap probably Braeside”.







“Malcolm on a very neglected war time Inglewood lawn (the mark is film damage). The driver is much too big for him. It seems strange that he is wearing ‘long’ trousers as this is years before he went to the Leys”. Photo, circa 1916





Malcolm, Russell and Wilfrid golfing at *Inglewood*, circa 1916





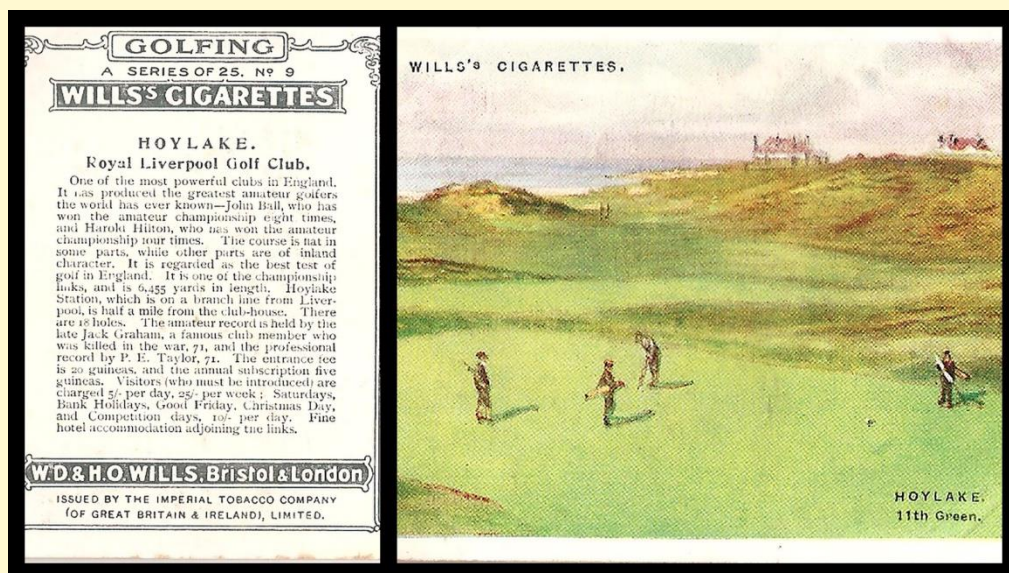
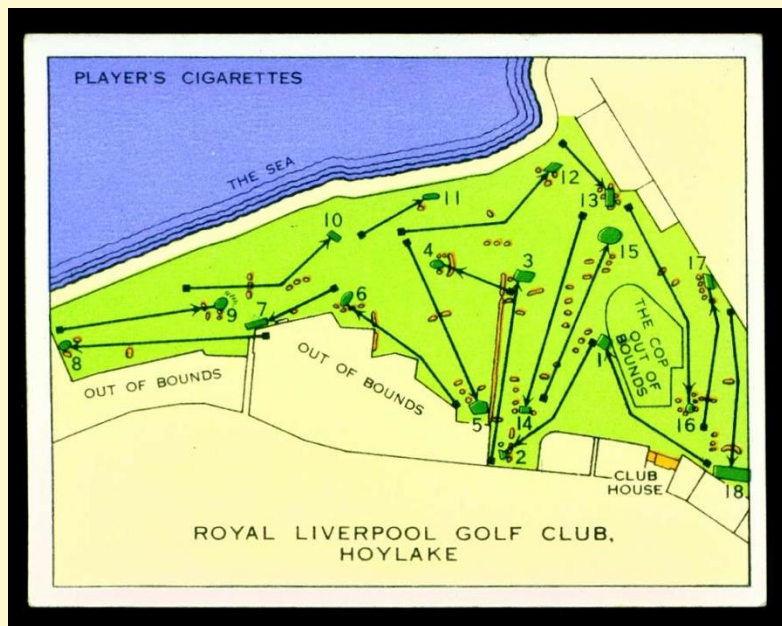
Russell, Malcolm, Wilfrid with golf clubs at *Inglewood*, circa 1916





Wilfrid, Russell and Malcolm outside Caldy golf course club house, circa 1916.  
“Caldy was still a 9 hole course in these days”.





The Royal  
Liverpool Golf  
Club has featured  
in several Lowry  
Lounge walks



THURSDAY. MAY 12, 1927.

## ! DECKHAND WITH A UKULELE.

### SCHOOLBOY'S WORLD SEARCH FOR INSPIRATION.

Fresh from Leys College, Cambridge, Malcolm Lowry, the seventeen-year-old son of a Liverpool cotton broker, sails from Liverpool on Saturday as a deckhand, at £2 10s a month, in the steamer Pyrrhus, which is going on a tramp voyage to the Far East, calling at Port Said, Shanghai, and possibly Yokohama.

Young Lowry, who lives with his parents at Inglewood, Caldy, Cheshire, told an "Echo" representative, to-day, that he desires to see something of the world and gain some experience of life before going to the university.

"The voyage will last eight to ten months," he said, "and during that time



Malcolm Lowry.

I shall work just the same as the other members of the crew. I shall not receive—and I don't want—any privileges.

### WRITING AND COMPOSING.

"The work will keep me fit, and will be a good thing for me. As I write short stories and compose dance music I hope to get fresh atmosphere and inspiration."

"I shall take my ukulele with me, and when off watch shall try to think out some new dance tunes. Ronald Hill, a school chum of mine, and I have written several Charlestons, one of which, 'Three Little Doggone Mice' (as mentioned in the "Echo" dancing notes some weeks ago), has already been published.

"Other dance tunes we have composed are 'Hindoo Babe,' 'You Got to Play Hot Rhythm,' 'Dream Man's a'Coming on a Train of Stars,' 'Dismal Swamp,' 'Dunnohow Blues,' and 'I've Said Good-bye to Shanghai.'"

Lowry, who won the Hoylake Boys' Golf Championship in 1925 is a brother of W. M. Lowry, the Birkenhead Park and international Rugby player.

Lowry in golfing gear, 1927,  
pictured in an article about  
his maiden voyage





Royal Liverpool golf  
course: Colin Dilnot  
leading a Lowry Lounge  
walk across the links





Wilfrid, Arthur, Russell and Malcolm ready for a swim, Marine Lake, West Kirby, circa 1918





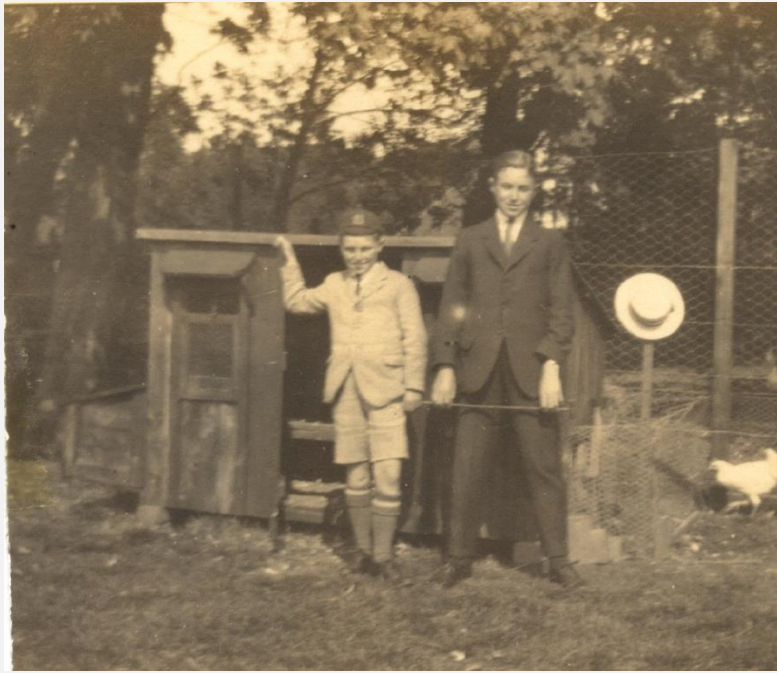
Malcolm,  
Arthur and  
friends sailing,  
probably  
Marine Lake,  
West Kirby





On the boat *Wendy*, Rothesay, 1921. Helen Lindsay, Malcolm, Arthur, Russell, Mr Lindsay





The Lowry brothers and their  
father at *Inglewood*







“Another slightly problematic date. Malcolm, Russell, Wilfrid in garden (all very tidy!) at Inglewood. The evidence of Wilfrid’s blazer – a hockey colour only – suggests 1916. Russell is at Caldicott (blazer). Malcolm evidently still at Braeside.”



POST CARD

CORRESPONDENCE

ADDRESS ONLY



He Jones was too small for  
Malcolm. So I have sent it  
back to Miss Gurneaton and  
asked her to send on a  
larger size. He is very well  
and jolly.

~~T.C.H.-J.~~  
3.11.1919.

<sup>10</sup>  
Mrs. Lowry.  
"Inglewood"  
Caldy,  
West Kirby,  
Cheshire.

Postcard from Caldicott School to Evelyn Lowry, 1919





“A school snap of Caldicott, staff and boys – I make the latter 48 in number as distinct from the ‘100 odd’ of the biographies. Dating is a little uncertain, but Russell is definitely No 3 from the right of the back row and seems at least 13, so year 1918. Malcolm query end boy, front row, left hand side of picture”.





Russell and Malcolm (standing) on their holiday boat, probably on the Isle of Man





Russell and Malcolm,  
"with bandaged  
eyes", 1920.  
"During this holiday in  
the Isle of Man Arthur  
took over from  
Wilfrid at half time.  
Evelyn did not come.  
For most of the time  
Arthur hired a fishing  
boat, the Florence.  
Great fun".



# FISHERMEN'S HYMN

From the Isle of Man

PEEL CASTLE

1. Hear us, O Lord, from heaven Thy dwell - ing the  
 2. Thou, Lord, dost rule, from the rag - ing of the

place. Like them of old in vain we toil all  
 sea. When loud the storm and fu - rious is the

night. Un - less with us Thou  
 gale. is Strong is Thine arm, our

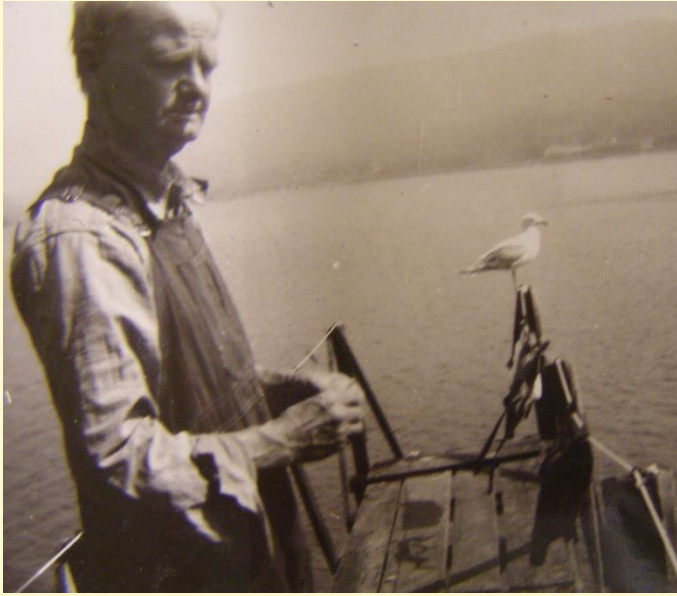
go who art the light, Come then, O  
 lit - tle barks are frail, Send us Thy

Lord, that we may see Thy face. A - men.  
 help, re mem - ber Gal - i - lee.



Manx Fishermen's Hymn sheet music and 45rpm recording by the Lon Dhoo and Lon Vale Choirs, 1958





Jimmy Craige with  
Lowry at Dollarton

Images © University of  
British Columbia Library,  
Rare Books and Special  
Collections, Malcolm  
Lowry Collection







Evelyn in the garden at *Inglewood*





Isle of Man, 1920: (left) Arthur and Malcolm aboard the *Florence*: “Malcolm’s eyes don’t seem to be troubling him”; (right) Russell, Evelyn and Malcolm





Malcolm and Arthur, 1924 - "on painfully stony beach one had to use the 'machines' to change in. Russell is taking the photo & is evidently exchanging a giggle with Malcolm"





Isle of Man, Malcolm on board with family and (left) two fishermen





Malcolm and parents at Stonehenge





Left: Malcolm catching lobsters, Guernsey, 1923:  
“Downtrodden, blinded, bandaged schoolboy”;  
above: Guernsey, circa 1922, Malcolm with "bullet  
wounded knees”





Malcolm with his mother and father on holiday, Budleigh Salterton, Devon, 1923



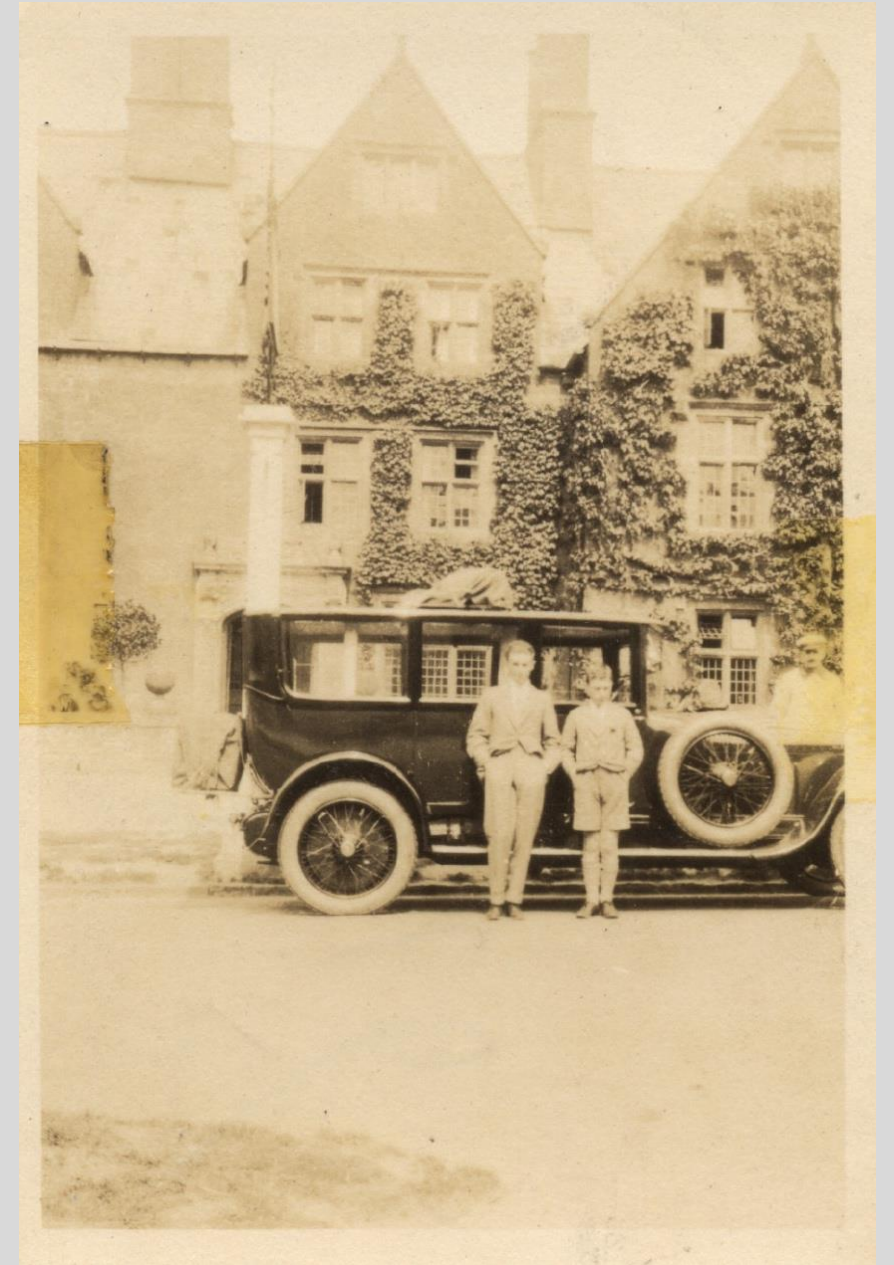


Malcolm, aged  
15, on holiday,  
Budleigh  
Salterton, 1924



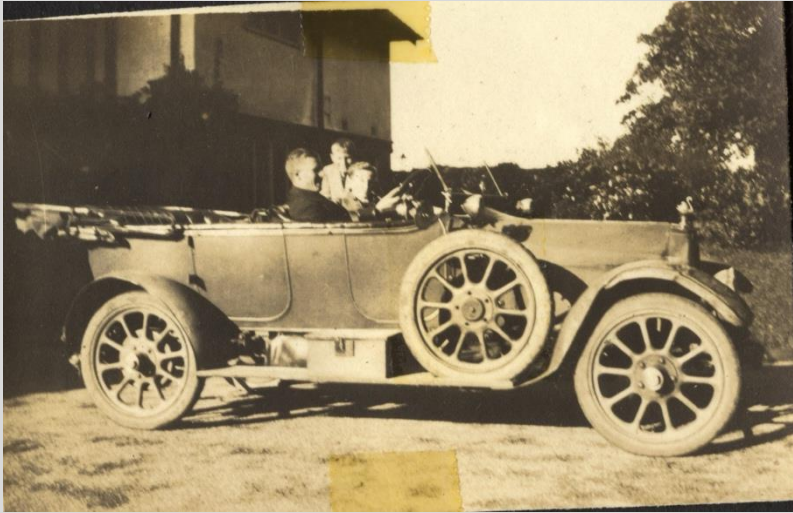


The Lowrys' Minerva car stopping off on the way to Budleigh Salterton, 1924; right: Russell and Malcolm on another car journey





The Lowrys' Minerva car











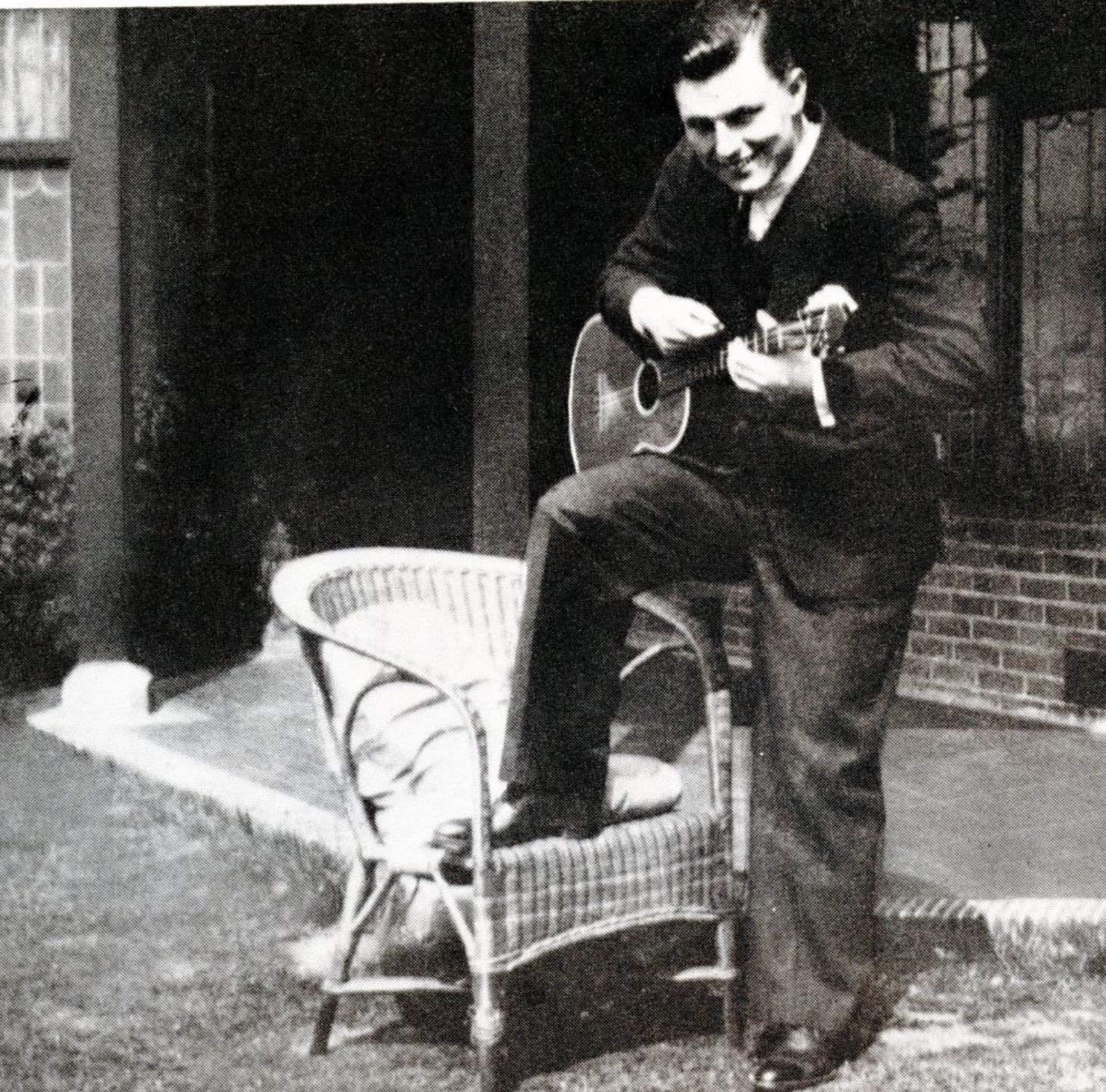
Malcolm, Russell, Evelyn and Russell's friend Bazeley in the garden at *Inglewood*, circa 1923-26 when Malcolm was studying at Cambridge.





Malcolm in 1930. Russell thinks the image on the right is in Cambridge





Lowry at *Inglewood*, 1932,  
playing his 'taropatch',  
attempted by Russell (above)





Leaf from walnut tree, found in the album



