



BLUECOAT
events

Winter / Spring 1984



Bluecoat Gallery

051-709 5689
Tuesday-Saturday 10.30-5
Closed Monday

Exhibition
January 10-28

CHARLES CHAPMAN —

Schools Sculpture Project

Charles Chapman's sculptures are life size representations of mechanical objects such as cars, cement mixers, electric drills and typewriters constructed from dis-used cardboard sheets and boxes which the artist shapes, stitches together and coats with wax and resin. The resulting sculptures are both witty and very accessible. Alongside an exhibition of some of these objects, Charles Chapman will be working in the gallery with groups of local schoolchildren who will be making their own sculptures.

Charles Chapman will be artist in residence at the International Garden Festival later in the year, and this event is supported by Merseyside Development Corporation/International Garden Festival.

**February 4-
March 3**

ANDRZEJ JACKOWSKI: Paintings and drawings 1982-1983

Paintings by Andrzej Jackowski have been seen in Liverpool in three previous *John Moores* exhibitions, and this exhibition is his largest one-man show to date.

The exhibition includes a group of four pictures entitled *Love's Journeys* in which the atmospheric intensity of Jackowski's earlier work is evident, though here the darkly mysterious interiors with single or pairs of figures have given way to a more open space. In the group *Love's Journeys* the space has become the deck of an open boat under the still night sky, elsewhere the passing of the seasons connects the differing moods of the paintings.

Works by Andrzej Jackowski have been included in the exhibition *Narrative Painting and The Subjective Eye* and he was a prize winner in the 1981 Tolly Cobbold exhibition, *Paintings and drawings 1982-83* will be touring to a number of venues and is accompanied by an illustrated catalogue with text by Timothy Hyman.

March 10-April 7

ROSE GARRARD: New work

In her work, Rose Garrard is concerned with the role of women, not only in society, but also as artists and as depicted by artists. In her recent exhibition *Frameworks* she explored the relationship between the role of the artist (traditionally male), the model (traditionally female) and the picture frame. Rose Garrard said of *Frameworks: Part of the meaning of the work challenges the art historical assumption that women should be contained by the frame but rarely seen as being creators of it.*

The new exhibition consists of an installation arising from a period of residency and research at Birmingham City Art Gallery where the historical collection (which includes Pre-Raphaelites, Degas' *Roman Beggar Women* and Epstein's *Rock Drill*) acted as a starting point for the work.

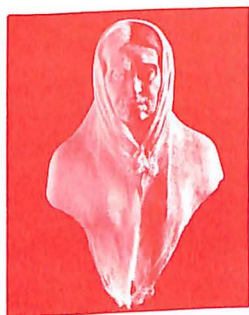


photo: R. J. Boyle
Detail from "The Last Supper" Rose Garrard.

EVENING CLASSES WINTER TERM 1984

Send your cheque/P.O. (made payable to **BLUECOAT SOCIETY OF ARTS**) to, BLUECOAT GALLERY, SCHOOL LANE, LIVERPOOL L1 3BX. Numbers are limited so early enrolment is strongly advised.

LIFE DRAWING

Tuesday 6.00 p.m.-9.00 p.m. Tutor: Dave Gleeson

17 January-20 March

Fee: £15.00 should you enrol and pay in advance for all 10 sessions or £1.65 per session.

ETCHING

Wednesday 6.00 p.m.-9.00 p.m. Studio 9. Tutor: George Drought

18 January-21 March

Fee: £16.50 (there will be an additional small charge for materials).

N.B. There is also a Tuesday etching class, tutor Meg Robbins, run by the W.E.A. Should you wish to enrol on that course please contact the W.E.A. Bluecoat Chambers, School Lane, Liverpool L1 3BX. Tel: 051-709 8023 for further details.

Dance

Thursday/Friday
8 & 9 March 7.30

MICHAEL CLARK

Deservedly described as *a volcano in our midst*, Michael Clark is one of the fast-rising stars of British dance.

Michael Clark studied at the Royal Ballet School before joining Ballet Rambert when he was 17. During that time he performed in Richard Alston's solo work *Soda Lake* which was televised on LWT's *South Bank Show*. Michael Clark has danced with Alston, Mary Fulkerson, Ian Spink and in 1982 with Karole Armitage in New York. He is currently choreographer in residence at London's Riverside. Recently created works include *12XU* for Extemporary (see below) and a new work for Mantis Dance Company.

Michael Clark is one of the most gifted dancers to have emerged in this country. His technique is marked by a stylistic purity and exceptional grace which he uses in an aggressive, challenging way.

Michael Clark is joined by Ellen van Schuylenburch, who performed in the north-west as a member of Bill T. Jones and Arnie Zane's company in November 1983.

Tickets: £3 (£1.50 concessions) — see **SPECIAL OFFER**

Tuesday/
Wednesday
27 & 28 March
7.30

EXTEMPORARY DANCE THEATRE

Extemporary are always worth seeing — *Sunday Times*
Since Emilyn Claid took over the direction of Extemporary in 1980, the company has forged ahead as one of the most enterprising dance companies in Britain. Its hallmarks are superb dancing, vibrant performances, exciting and wide musical range (from Jelly Roll Morton to Laurie Anderson) and works by leading British and American choreographers. This season the choreographers have included Dan Wagoner (who created *Dolly Sods* for Mantis), Jane Dudley and Michael Clark whose *12XU* is a furious (male) pas-de-deux with music by Wire.

Tickets: £3 (£1.50 concessions)

SPECIAL OFFER — see Michael Clark and Extemporary Dance Theatre and **SAVE** money.

Normal ticket prices for 2 separate shows: £6 (£3 concessions). . . . book for **both** together — tickets will cost: **£5 (£2.50 concessions)**

See both shows and save money, you can't afford not to

Music

Friday January 27 **EDWARD COWIE**

6.30 Pre-concert
Talk Free

As part of the Philharmonic's Contemporary Composer Seminar, Edward Cowie will introduce the Eisler Ensemble's performance, with special reference to John Woolrich's work *Cascades*.

Friday January 27 **THE EISLER ENSEMBLE, director John Tilbury**

John Tilbury
piano

Alex Balanescu
violin

Helen Verney
cello

Ian Mitchell
clarinet

Edwin Prevost
percussion

Michelle Todd
soprano

This ensemble takes its name from the German composer and pupil of Schoenberg Hanns Eisler (1898-1962). He was held in high regard as a critic and philosopher who saw music in terms of humanity's struggle against injustice and exploitation.

Pianist John Tilbury is well-known for his long collaboration with the late Cornelius Cardew and is acknowledged to be one of the leading exponents of contemporary keyboard works, particularly those of John Cage. For this tour he has put together a programme which includes works by **Eisler, Cardew** and other composers with strong political/social views.

Tickets: £3 (£1.50 concessions)

This concert is part of the Regional Contemporary Music Circuit which receives financial support from the Arts Council of Great Britain and Merseyside Arts.

Friday April 6 **MUSICA ANTQUA OF LONDON, director Philip Thorby**

Margaret Philpot
alto

Rogers Covey-Crump
tenor

Jakob Lindberg
lute, vihuela
renaissance guitar

Alison Crum
Philip Thorby
Andrew Watts
Margaret Westlake

Music from the Court of Spain

The marriage of Ferdinand and Isabella in 1479 united Spain and gave birth to El Siglo de Oro, The Golden Age. The arts flourished and the Palace Song Book of Ferdinand and Isabella (*Canccionero Musical de Palacio*) is justly renowned as one of the finest and most comprehensive collections of native music and poetry. Musica Antiqua of London presents a varied programme of vocal and instrumental works which starts with the rowdy invitation to cross over the stream (Pase el agoa) from a lover to his lady and includes folk-songs as well as devotional works by **Francesco de la Torre, Juan Ponce** and music for vihuela by **Mudarra**.

Tickets: £3 (£1.50 concessions)

renaissance viols,
recorders,
crumhorns,
shawms
sackbuts
percussion

This concert is part of the Early Music Network, administered by the Early Music Centre which receives financial support from the Arts Council of Great Britain and Merseyside Arts.

Bluecoat Shop

Monday to Saturday 10-5

The Bluecoat Shop occupies the area to the right of the main entrance on the ground floor. It overlooks the garden and serves light refreshments as well as selling original works by local artists, postcards of Liverpool, artists postcards and art journals. Tickets for events promoted by the Society are also on sale.

BOOKING TICKETS for events in this leaflet

By phone: tickets may be reserved by telephone but must be collected and paid for 30 minutes before the start of the performance.

In person: tickets on sale in the Bluecoat Shop Monday to Saturday 10-5.

By post: cheques made payable to **Bluecoat Society of Arts**. Please enclose a stamped addressed envelope.

On the door: ticket sales commence half an hour before the advertised start of performance.

Concessionary prices (claimants): apply to students, pensioners, under 16s and the unemployed.

Bluecoat Friends: 10% discount on tickets bought in advance. Please note that you must produce your membership card and that this discount does **not** apply to tickets bought on the evening of performance.

LATECOMERS

Latecomers may not be admitted until a suitable break in the performance. This must be strictly observed in a small auditorium as any interruption disturbs both the audience and the performers.

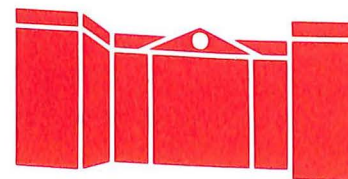
Blundell's

051-709 2179

Monday to Saturday 12-3 and 5.30-10.30 pm

Licensed restaurant named after one of the founders of the Bluecoat, Bryan Blundell.

Why not enjoy a meal before or after an evening performance in these friendly surroundings. Parties, receptions etc. can be catered for by arrangement. Telephone Mary McCarthy for details.



**...not just a
pretty facade...**

Bluecoat

The Bluecoat is a Grade 1 listed building of architectural importance. It is the oldest building in the city centre, but it isn't simply a monument to times past. It is an active arts centre open to the public six days a week until 10.30pm. The Bluecoat houses a number of cultural societies including Merseyside Arts (051-709 0671). The Workers' Educational Association (051-709 8023) and The Merseyside Film Institute Trust (051-709 4260) and other tenants include The Bluecoat Display Centre (051-709 4014), artists, craftsmen, musicians and many more.

The Bluecoat Society of Arts administers and maintains the building and is directly responsible for the gallery, concert hall, coffee shop and rooms hired out for meetings etc. It has done so since 1927 when the Bluecoat was saved from demolition specifically to promote the arts in this historic and beautiful building.

ROOM HIRE

Rooms of various sizes are available for hire for meetings, concerts, wedding receptions, music practice etc. Please ring 051-709 5297 Monday to Friday 9.30-5 for details.

FAIRS, MARKETS, etc.

Details of regular book markets, record fairs, collectors fairs, etc. held at the Bluecoat, can be found in the local press.

Volunteers

The Bluecoat is always in need of voluntary help. We would like to have two special teams of people, some to help during the day in the gallery and some to help in the evenings at performances.

Gallery helpers are urgently required to invigilate and assist visitors in the gallery. The exhibitions change approximately every four weeks and assistance with the changeover would also be welcome, as would poster distribution. Changing exhibitions provides a chance to meet the artists and become familiar with the works before the exhibition opens to the public.

Performance helpers are required to sell programmes, usher and help with the get-out after the performance is over. We'd particularly like to hear from young people willing to lift and carry equipment. For anyone interested in the performing arts, this behind-the-scenes activity provides a unique sight into life after the performance is over.

If you are able to help in any way at all please ring (or write to) the Director on 051-709 5297.

Events listed in this leaflet are all promoted by the Bluecoat Society of Arts.

The Bluecoat Society of Arts acknowledges financial assistance from Merseyside Arts and Merseyside County Council.

Bluecoat Friends

Conserving and running a building like the Bluecoat is quite a complex operation. We need help in a variety of ways, both practical (see 'Volunteers') and financial. By joining the Bluecoat Friends you can help in both ways. In return for your subscription (£5 ordinary membership, £3 concessions) you will receive:

- invitations to exhibition private views
- discount on ticket prices and priority booking
- a newsletter keeping you up to date with Bluecoat activities.

We feel that the Bluecoat is a vital link with Liverpool's past — we'd like to hear your suggestions to help us improve our services to the public in the future.

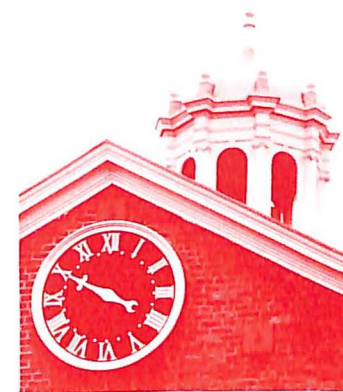


photo: Light Impressions

lend us a hand

I wish to join Bluecoat Friends

I enclose a cheque £..... made payable to BLUECOAT SOCIETY OF ARTS.

Name

Address

Telephone.....

Signature.....

(* concessionary category applies to students, unemployed and pensioners).

Bluecoat Society of Arts, Bluecoat Chambers, School Lane, Liverpool L1 3BX 051-709 5297

Alison Edis — Director

Bryan Biggs — Gallery Director

Barbara Foran — Artistic Administrator